

King's Business College

Ralei. N. C.



CAROLINAS' LEADING SCHOOL OF
BUSINESS AND SHORTHAND

MAIL COURSES ALSO GIVEN

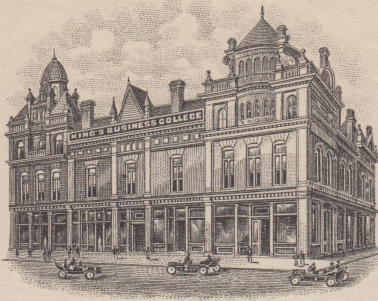
COLLEGES LOCATED AT

RALEIGH, N. C.
CHARLOTTE, N. C.

E. L. LAYFIELD,
PRESIDENT

Mr. Paul Page,
Farm School,
N. C.





COLLEGE, CORNER FAYETTEVILLE
AND DAVIE STREETS

MAIL COURSES GIVEN

King's Business College,

A SCHOOL OF ACTUAL BUSINESS TRAINING

Colleges located at
Raleigh, N.C.
Charlotte, N.C.

SHORTHAND AND PENMANSHIP.

E.L. LAYFIELD, President

CORRESPONDENCE SHOULD BE ADDRESSED TO
KING'S BUSINESS COLLEGE.

Raleigh, N.C. March 7, 1923.

Mr. Paul Page,
Farm School, N. C.

Dear Mr. Page:

How would you like, in a few months from now, to begin working in an up-to-date business office at a starting salary of \$75 or \$100 a month?

Mind you, I said start at the above salary. The business career offers opportunities for making two, five or perhaps ten thousand dollars per year. The limit of your earnings will be fixed only by your training, capacity and industry.

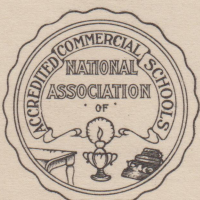
The King's College training will start you right. We have trained upwards of 20,000, and we can help you, if you will only give us the chance. Thousands of King's graduates are with leading Carolina firms. Our school facilities, our courses of study, our teaching forces are of the highest order. Our free Employment Bureau is at the service of our students and graduates at all times.

If you are really interested in securing and holding an attractive, high salaried office position, don't lay this aside until you have read the inclosed folder. It will show YOU how to enter the Door of Success. Our nicely illustrated catalog will be sent you upon returning the post card also inclosed.

Take the first step towards independence and success today. It will cost you only a minute and one cent to get our proposition. Return the post card!

Yours very truly,

E. L. Layfield
President.



The Emblem
of the
Efficient School